

Welcome to Okunoshima

Okunoshima Island is home to many rabbits.

Very occasionally, some trouble can arise because they are in close proximity to humans.

Follow the rules and observe the proper conduct for the rabbits' ecosystem and problems on the island.

The rabbits' ecology

The rabbits on the island are the breed recognized as domestic rabbits, which is the European rabbit species not native to Japan. They live in underground burrows and maintain territories. Rabbits have exceptionally high reproductive rates, often birthing approximately five offspring at a time several times annually. Their lifespan in the wild is around two to three years.

Why are they on the island?

It is believed that they were originally brought to the island in the 1970s. They live in a semi-feral state, eating island vegetation and often relying on the aid of humans, including tourists who provide them with food.

What problems are there?

Various problems can arise when the amount of food they receive from tourists increases too much. Examples are population growth due to increased fertility and therefore more fights for territory between rabbits, and a possibility for infectious diseases to spread.

In addition, if excess food is left uneaten it rots and leads to unsanitary conditions, then causing a rise in the population of wild boars and rats.



Facilities information

Okunoshima Visitor Center

tel.0846-26-0100

In addition to exhibitions and information on the nature and history of Setonaikai National Park, visitors can take part in craft experiences such as making bamboo washi paper and more.

- Closed: Weds. (Jan.-Feb.: Weds. and Thurs.), end-of-year holiday season
- Hours: 9:00 a.m.-4:00 p.m. ● Admission: Free

OKUNOSHIMA Poison Gas Museum

tel.0846-26-3036

A variety of materials are on display related to the poison gas once manufactured in facilities on the island.

- Closed: End-of-year holiday season, other provisional closings
- Hours: 9:00 a.m.-4:00 p.m.
- Admission: 19 years and older, 150 yen; under 19 years, free

National Park Resort KYUKAMURA OHKUNOSHIMA

The only lodgings on the island. Camp site, rental cycles, an outdoor pool, and fishing rod rentals are also available. tel.0846-26-0321

- 65 rooms, large hot spring with a view (OK to use without staying overnight), banquet hall, convention hall
- Restaurant, cafe, and store available without staying overnight
- Parking at Tadanoumi Port or Sakari Port, regular vehicles not permitted on the island

Use information

Camp sites: 11 total (5 with tents already set up)

- Rental equipment, rental tents, and BBQ facilities available
- Only camp site users' vehicles can enter the parking lot (speed: 10 km/h).

Rental cycles *Bringing bicycles from off the island OK

- The bicycle path around the island runs clockwise one way. Please always dismount when going downhill.
- 2 hours/rental <Electric: 800 yen, regular: 600 yen>

Outdoor pool *Mid-Jul.-late Aug.

- Resort Kyukamura Ohkunoshima guests: Free
- Adults: 400 yen, elementary school students: 300 yen, 4 years and older: 200 yen

Swimming beach *Mid-Jul.-mid-Aug.



Kind request to visitors

For the safety of both humans and rabbits, we kindly request that you read and follow the guidelines below.



1 Refrain from touching the rabbits or feeding them directly from your hand.



- There is a possibility of contracting diseases or carrying fleas and ticks.
- Touching or holding the rabbits may cause them psychological stress and they may be dropped or injured accidentally.
- Holding food out in your hand may cause the rabbits to bite and injure you.



2 Avoid feeding rabbits on the road and watch your step for rabbits.



- Roads are dangerous places for feeding as they are used by bicycles and vehicles.
- Rabbits crossing the road to search for food can cause accidents.
- Rabbits at your feet may be accidentally injured.



3 Observe the rabbits until they finish eating and please take leftovers with you.



- Too much food leads to too many rabbits which can lead to problems.
- Leftover food can rot and become food for larger predatory, wild animals such as wild boars and rats.
- If wild boars increase in number and begin to approach humans, it could become dangerous.



4 Do not bring pets or take rabbits off the island.



- Releasing pets into the wild can cause ecological disruption and the possible death of the pets due to the harsh environment.
- There is a possibility of disease transmission between animals.

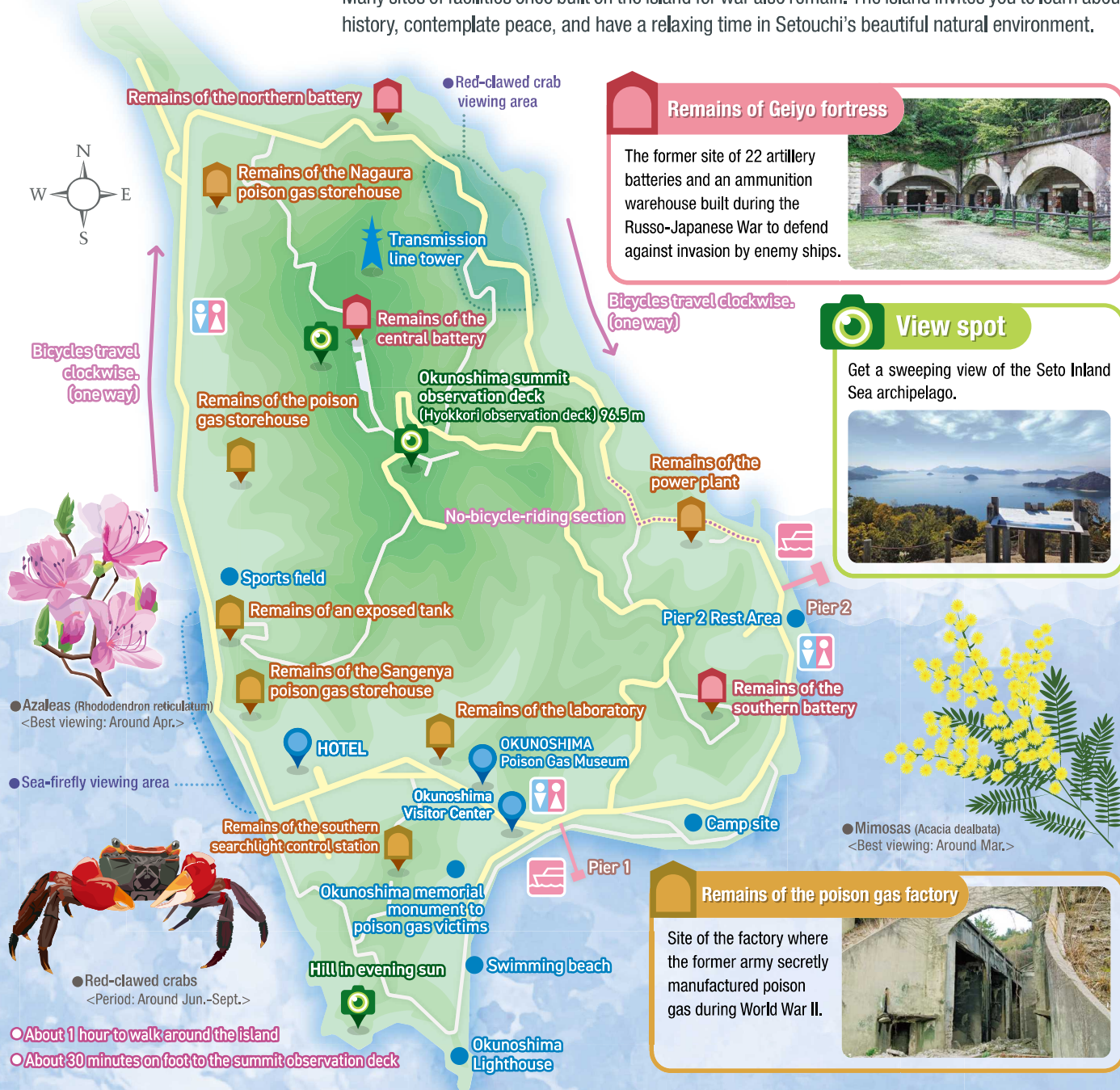
*Abandoning animals is prohibited by the "Act on Welfare and Management of Animals" law.

Setonaikai National Park

大久野島

Okunoshima Island

Okunoshima is a 4.3 km-circumference island in the waters off Takehara, Hiroshima. Visitors can enjoy the beautiful scenery of the archipelago in the Seto Inland Sea by experiencing the seasons firsthand, with cherry blossoms and azaleas, ocean swimming, and autumn leaves. Many sites of facilities once built on the island for war also remain. The island invites you to learn about history, contemplate peace, and have a relaxing time in Setouchi's beautiful natural environment.



Remains of Geiyo fortress

The former site of 22 artillery batteries and an ammunition warehouse built during the Russo-Japanese War to defend against invasion by enemy ships.



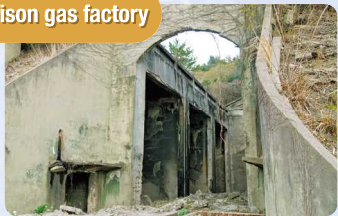
View spot

Get a sweeping view of the Seto Inland Sea archipelago.



Remains of the poison gas factory

Site of the factory where the former army secretely manufactured poison gas during World War II.



- About 1 hour to walk around the island
- About 30 minutes on foot to the summit observation deck